

BUILDING TOWARDS OUR FUTURE

Presentation from the weekend of the 13/14 April



Dear Parishioners,

During the weekend of April 13th and 14th, the Building Committee presented an update to the parish community. For those who were not present at Mass, or for those who would like a physical copy of the presentation, below is the information that was discussed.

If you have any questions or require clarification, please don't hesitate to contact us via email at buildingchair@christchurchnorth.org.nz

God bless,

Robert de Roo



What has been done to date?

Engagement Process with the Parish – 2021 through 2022.

Engaged with the Parish to look at four key themes and what these mean to us as a Parish:

- The Church,
- The Pastoral Centre,
- Spirituality,
- Belonging.

Developed a Preliminary Specification with the aid of Dominic Hassan – Architect - 2022.

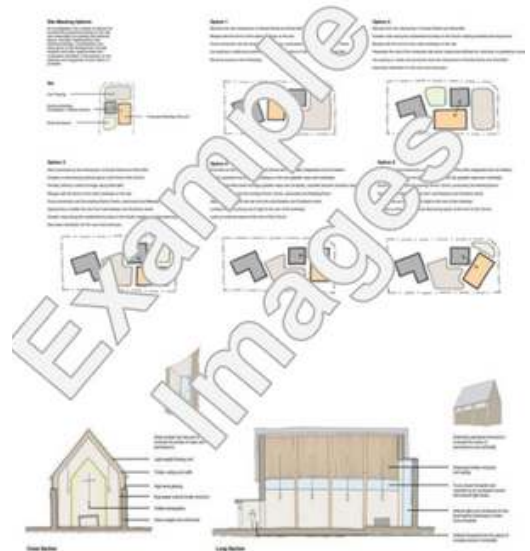
The 2,500 inputs were reviewed and this helped to develop a preliminary specification to support the development of a master plan and conceptual designs.

Architecture – Selection Process – 2023.

- Engaged in a procurement process with 10 Architecture Firms.
- We engaged with 5 directly through a review process and Selected Ignite Architects.

Budget of \$50,000 allocated for the following activities:-

- Architect to develop initial master plan and design concepts,
- Any initial engineering investigative work,
- Budget development.



TIMELINE

Our 2024 journey.

Master Planning – in work until mid 2024.

- This is to look at whole site in terms of potential building locations, access, car parking,
- Identify the option that best suits the needs for now and into the future for the parish,
- We will be working with the Diocese and School during this process.



Conceptual Planning - mid to end of 2024.

- Develop basic building forms,
- Continue to develop the spacial requirements based on the work started during the consultation phase,
- Consider long term development plan and options.

Financial Modelling - mid to end of 2024.

- Develop high level budget and funding model,
- This is important as we need to be informed in our decision making process,
- Fundraising planning and commencement.



Parish and Diocese Engagement – throughout 2024.

- **At end of each key phases (Master Plan and Conceptual Plans) we will:**
 - Engage with parishioners,
 - Seek agreement from the Diocese.
- **Regular updates to Parish and Diocese through:**
 - Newsletters,
 - Videos posted online through the website and social media.



EXPERTS NEEDED

Can you help?

This project will require the support and help of many people as the project progresses.

At this time we are looking to establish a pool of experts in the following areas:

- Land-use planning advice,
- Landscaping,
- Traffic management,
- Civil, Geotech, Structural, Fire and Building Services Engineers,
- Quantity Surveyors,
- Construction Project Managers etc.



Whether you are working or have worked in construction, here in New Zealand or overseas we would very much like to hear from you. We want to tap into your knowledge and expertise as we progress to ensure we are making good decisions along the way. **Please contact us via the email address below if you are able to offer your expertise.**

Later this year we will be asking for help in other areas like the establishment of a fundraising committee.

CONTACT DETAILS

buildingchair@christchurchnorth.org.nz

(03) 359 1438

Link to website for regular updates

<https://christchurchnorth.org.nz/towards-our-future>